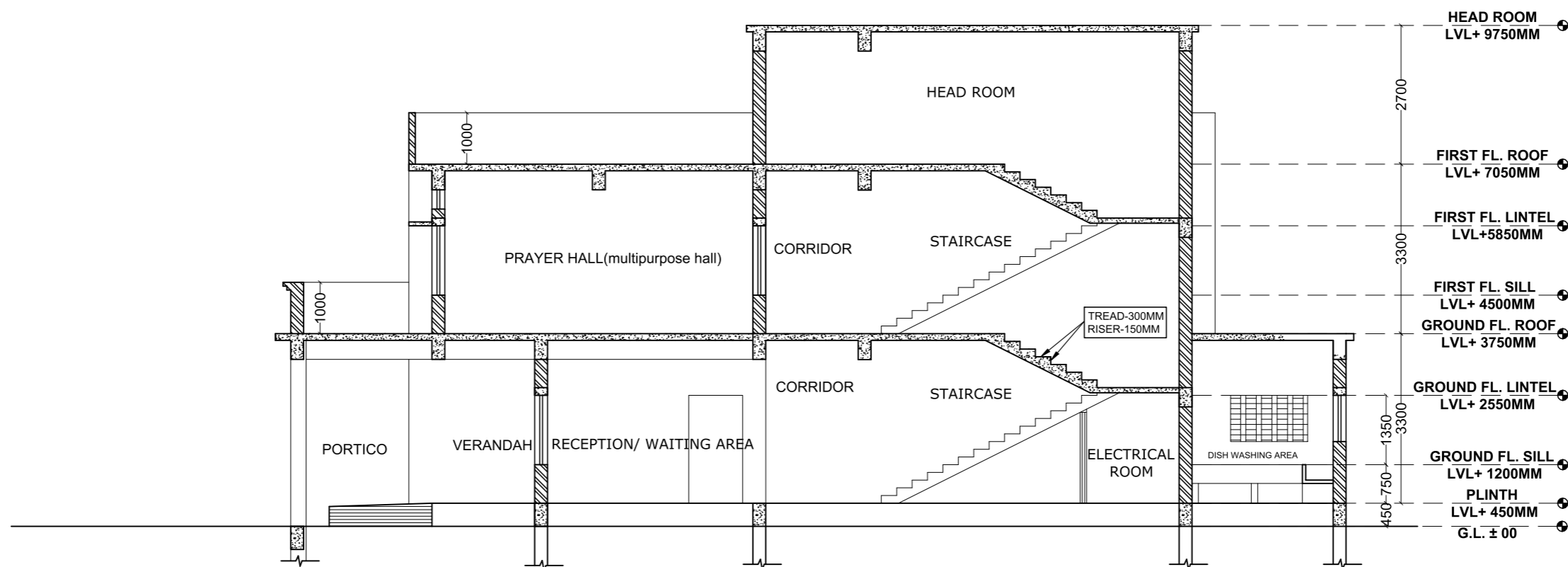


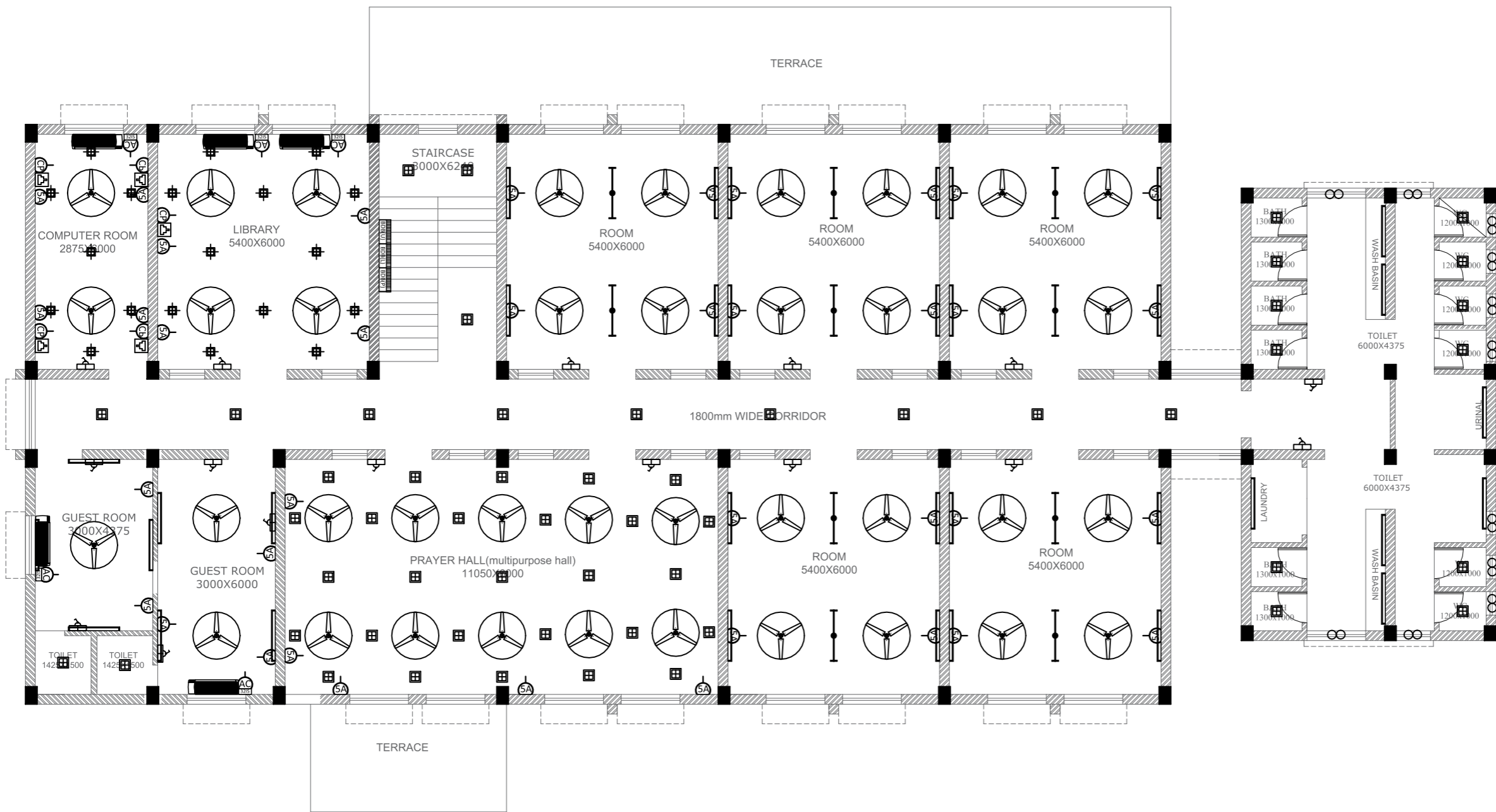
FRONT ELEVATION



SECTION - YY

| | | | | | | |
|---|--|--------------------|--|-------------------------------|------------------------------|--|
| PROJECT :- GAIL CSR PROJECT- SUPPORT FOR CONSTRUCTION OF HOSTEL BUILDING TO PROMOTE LITERACY AMONG TRIBAL STUDENTS AT VANVASHI KALYAN ASHRAM, RAIGADA, ODISHA | TOPIC :- FRONT ELEVATION AND SECTION | | SIGNATURE OF STRUCTURAL ENGINEER :- | CHECKED BY :- | CHECKED BY :- | DESIGNED BY :- <div style="text-align: center;"> MODUS <small>CREATIVES & PROJECTS PVT LTD.</small> </div> |
| | DRAWING NO: HOSTEL/RAIGADA/AR4 | SCALE : NTS | | APPROVED BY :- | | |

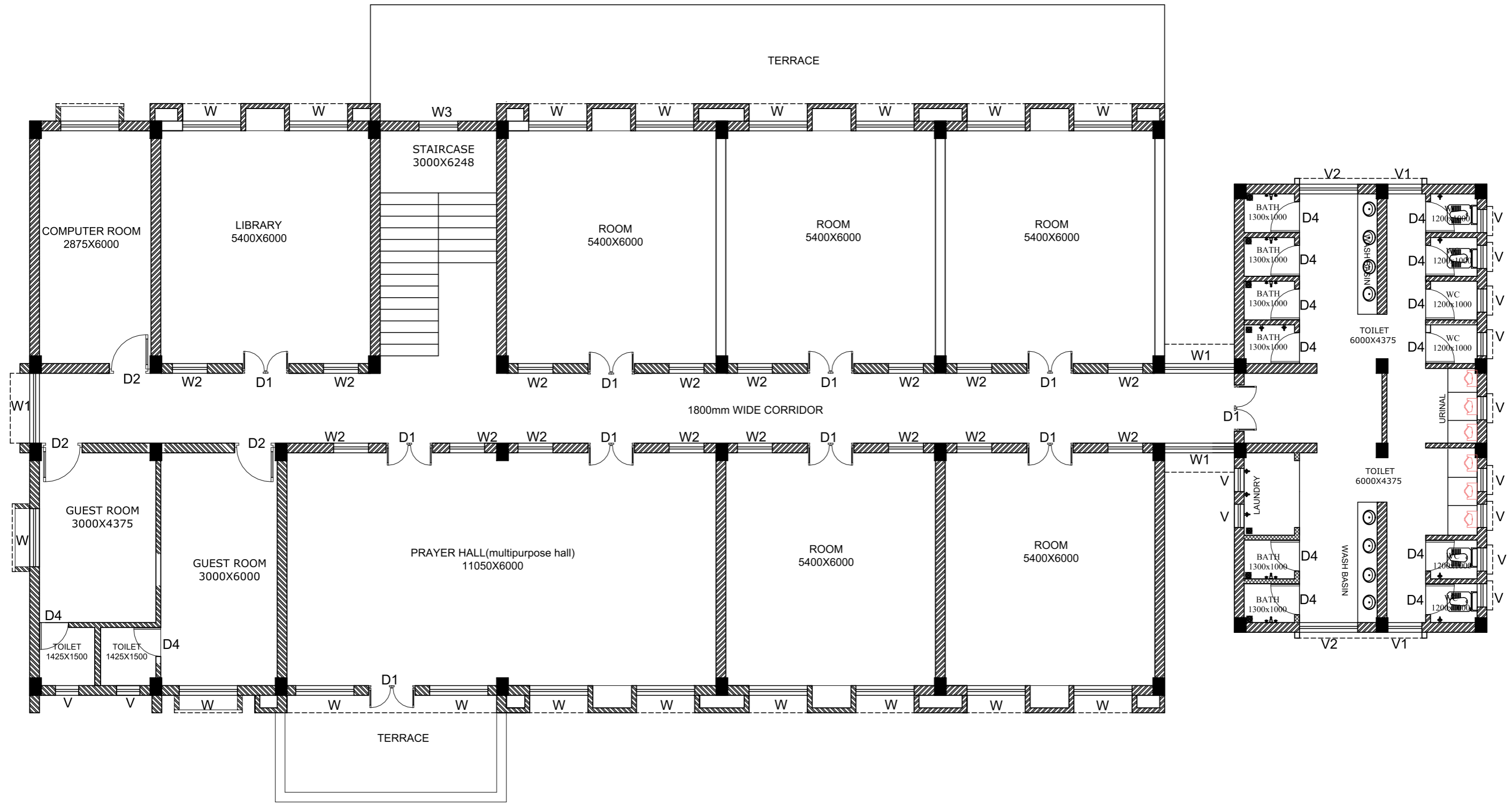
| LEGEND OF ELECTRICAL FITTINGS | | | |
|-------------------------------|--------|--|--------------------|
| SL. | SYMBOL | SPECIFICATION | HEIGHT ABOVE F.F.L |
| 01 | | 1200/1400mm sweep ceiling fan | Ceiling Level |
| 02 | | 20 watt circular false ceiling fitting | |
| 03 | | 20 watt circular Surface fitting | |
| 04 | | 20 watt circular false ceiling fitting UPS | |
| 05 | | 20 watt circular Surface fitting UPS | |
| 06 | | 300mm sweep exhaust fan | |
| 07 | | TV Point | 900mm Height |
| 08 | | DP Switch 32A | 900mm Height |
| 09 | | 5Amps Switch + Plug Socket outlet only on independent board | 900mm Height |
| 10 | | 15Amps Switch + Plug Socket outlet only on independent board | 900mm Height |
| 11 | | Switch Board with 5 Amps. Socket on it | 1350mm Height |
| 12 | | Branch Distribution board UPS | 2100mm Height |
| 13 | | Branch Distribution board Light | 2100mm Height |
| 14 | | Branch Distribution board power | 2100mm Height |
| 15 | | Electrical main panel | |
| 16 | | 32A Industrial socket | |
| 17 | | 10 watt LED Mirror light | 2100mm Height |
| 18 | | Split AC Indoor Unit | |
| 19 | | AC Out door Unit | |
| 20 | | Two way Electric meter | |
| 21 | | Wifi Router | |
| 22 | | 20W Led Tube light | |
| 23 | | CHARGING POINT FOR ELECTRIC VEHICLE | |
| 24 | | PUBLIC ADESIVE SYSTEM (PA SYSTEM) | |
| 25 | | BULLET CAMERA | |
| 26 | | ANGLE HOLDER | |
| 27 | | 36 W SQUARE LIGHT | |



FIRST FLOOR PLAN

AREA- 498.46 sqm

| | | | | | |
|---|---|--|-------------------------------|------------------------------|---|
| PROJECT :- GAIL CSR PROJECT- SUPPORT FOR CONSTRUCTION OF HOSTEL BUILDING TO PROMOTE LITERACY AMONG TRIBAL STUDENTS AT VANVASHI KALYAN ASHRAM, RAIGADA, ODISHA | TOPIC :- FIRST FLOOR ELECTRICAL LAYOUT | SIGNATURE OF STRUCTURAL ENGINEER :- | CHECKED BY :- | CHECKED BY :- | DESIGNED BY:- <div style="text-align: center;">MODUS CREATIVES & PROJECTS PVT LTD.</div> |
| | DRAWING NO: HOSTEL/RAIGADA/ELE2 SCALE : NTS | | APPROVED BY :- | | |

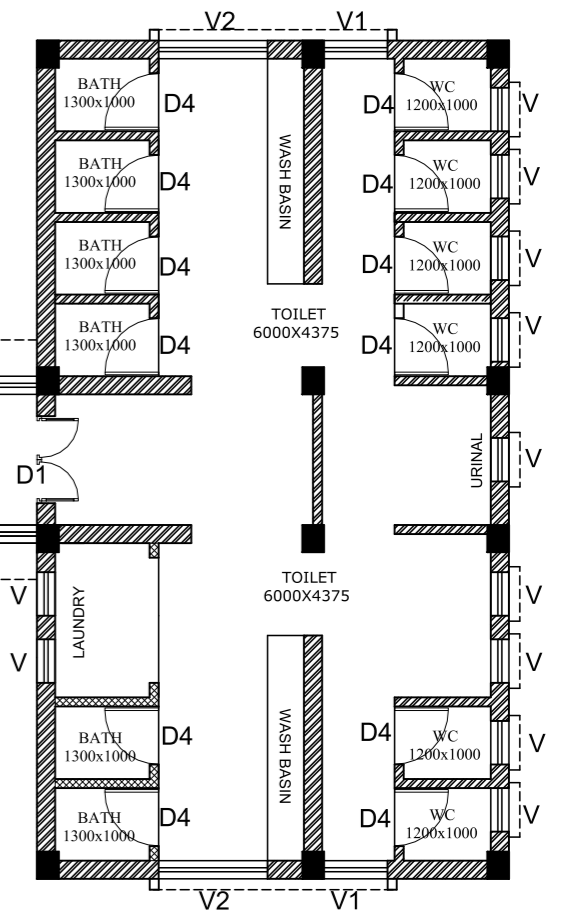
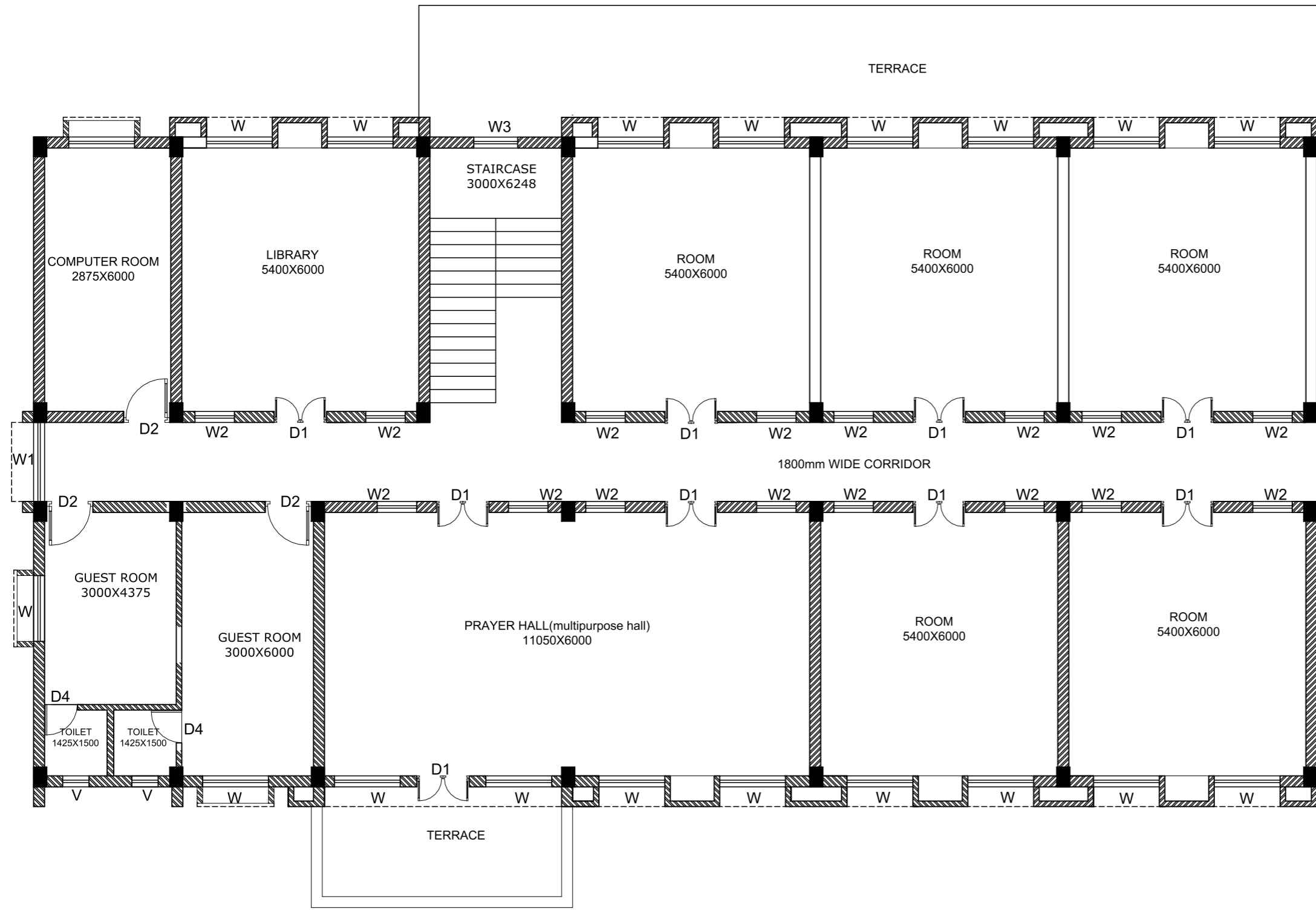


FIRST FLOOR PLAN

AREA- 498.46 sqm



| | | | | | | |
|---|--|--------------------|--|-------------------------------|------------------------------|---|
| PROJECT :- GAIL CSR PROJECT- SUPPORT FOR CONSTRUCTION OF HOSTEL BUILDING TO PROMOTE LITERACY AMONG TRIBAL STUDENTS AT VANVASHI KALYAN ASHRAM, RAIGADA, ODISHA | TOPIC :- FIRST FLOOR PH LAYOUT | | SIGNATURE OF STRUCTURAL ENGINEER :- | CHECKED BY :- | CHECKED BY :- | DESIGNED BY:- <div style="text-align: center;">MODUS CREATIVES & PROJECTS PVT LTD.</div> |
| | DRAWING NO: HOSTEL/RAIGADA/AR2 | SCALE : NTS | | APPROVED BY :- | | |



| DOOR WINDOW SCHEDULE | | |
|----------------------|--|----------------|
| OPENING MKD | SILL LVL(MM) | LINTEL LVL(MM) |
| D-1800 X 2100 | 00 | 2100 |
| D1-1200 X 2100 | 00 | 2100 |
| D2-1050 X 2100 | 00 | 2100 |
| D3-900 X 2100 | 00 | 2100 |
| D4-750 X 2100 | 00 | 2100 |
| W-1500 X 1350 | 750 | 2100 |
| W1-1800 X 1350 | 750 | 2100 |
| W2-900 X 1350 | 750 | 2100 |
| W3-900 X 1350 | REFER SECTION | |
| V- 600 X 600 | 1500 | 2100 |
| V1- 600 X 900 | 1200 | 2100 |
| V2- 1500 X 900 | 1200 | 2100 |
| 600 X 375 | BELOW ROOF BEAM (REFER SECTION/ELEVATION) | |

FIRST FLOOR PLAN
AREA- 498.46 sqm



PROJECT :-
GAIL CSR PROJECT- SUPPORT FOR CONSTRUCTION OF HOSTEL BUILDING TO PROMOTE LITERACY AMONG TRIBAL STUDENTS AT VANVASHI KALYAN ASHRAM, RAIGADA, ODISHA

TOPIC :-
FIRST FLOOR PLAN

DRAWING NO: HOSTEL/RAIGADA/AR2 **SCALE :** NTS

SIGNATURE OF STRUCTURAL ENGINEER :-

CHECKED BY :-

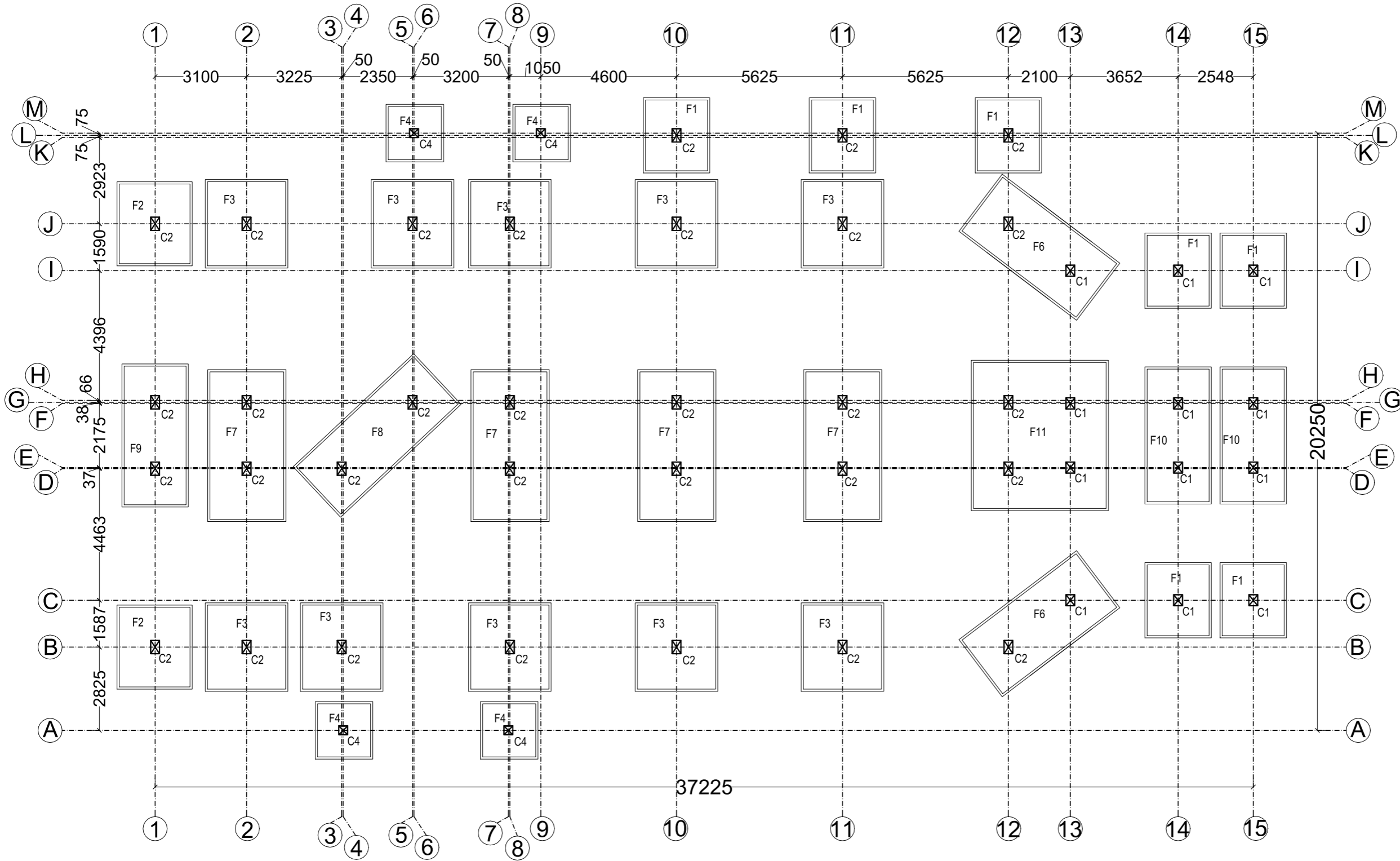
APPROVED BY :-

CHECKED BY :-

DESIGNED BY:-

MODUS
CREATIVES & PROJECTS PVT LTD.

N-1/11, IRC VILLAGE, BHUBANESWAR-15
PHONE - 0674 - 6005466
e-mail : modus.creatives@gmail.com



| DETAILS OF FOUNDATION FOR COLUMN FOOTING | | | |
|--|-----------|-----------|-----------|
| Footing Mkd. | L (in mm) | B (in mm) | D (in mm) |
| F1 | 2100 | 2400 | 400 |
| F2 | 2400 | 2700 | 450 |
| F3 | 2650 | 2850 | 600 |
| F4 | 1800 | 1800 | 400 |
| F6 | 2280 | 4850 | 600 |
| F7 | 2500 | 5000 | 600 |
| F8 | 2200 | 5450 | 600 |
| F9 | 2100 | 4700 | 550 |
| F10 | 2100 | 4500 | 550 |
| F11 | 4500 | 4950 | 550 |

| COLUMN SIZE | |
|-----------------|-------------|
| COL. NO AS MKD. | COLUMN SIZE |
| C1 | 300X375 |
| C2 | 300X450 |
| C3 | 400X600 |
| C4 | 300X300 |

LAYOUT OF COLUMNS AND FOOTINGS

PROJECT :-
 GAIL CSR PROJECT- SUPPORT FOR CONSTRUCTION OF HOSTEL BUILDING TO PROMOTE LITERACY AMONG TRIBAL STUDENTS AT VANVASHI KALYAN ASHRAM, RAIGADA, ODISHA

TOPIC :-
 LAYOUT OF COLUMN AND FOOTING

DRAWING NO: HOSTEL/RAIGADA/STR1

SCALE : NTS

SIGNATURE OF STRUCTURAL ENGINEER :-

CHECKED BY :-

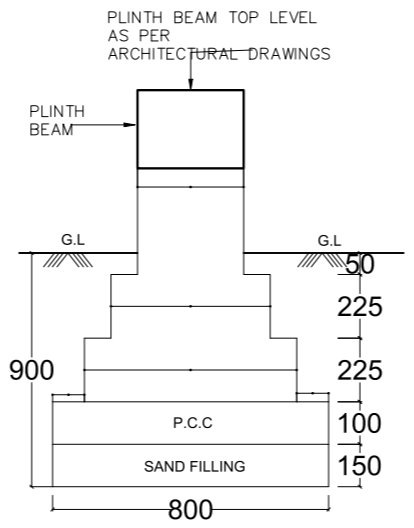
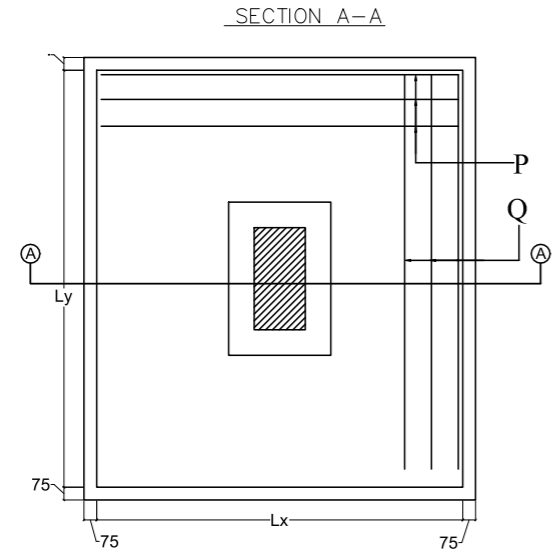
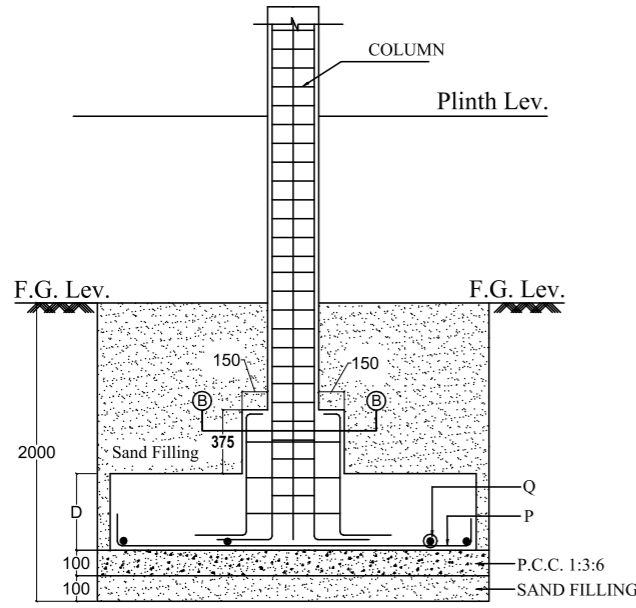
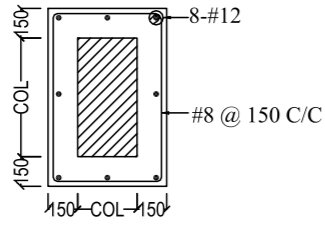
CHECKED BY :-

APPROVED BY :-

DESIGNED BY :-

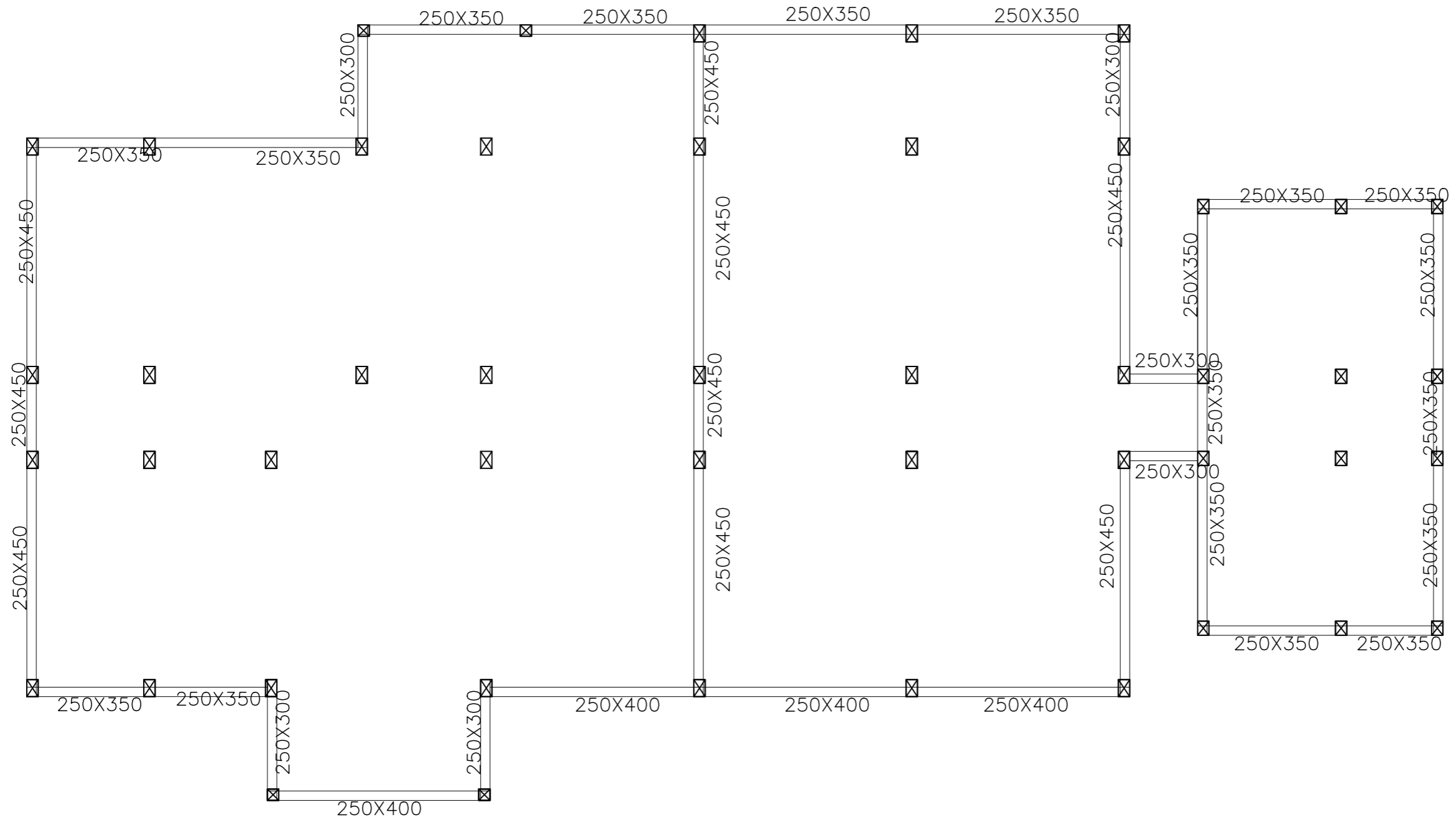
MODUS
 CREATIVES & PROJECTS PVT LTD.

N-1/11, IRC VILLAGE, BHUBANESWAR-15
 PHONE - 0674 - 6005466
 e-mail : modus.creatives@gmail.com



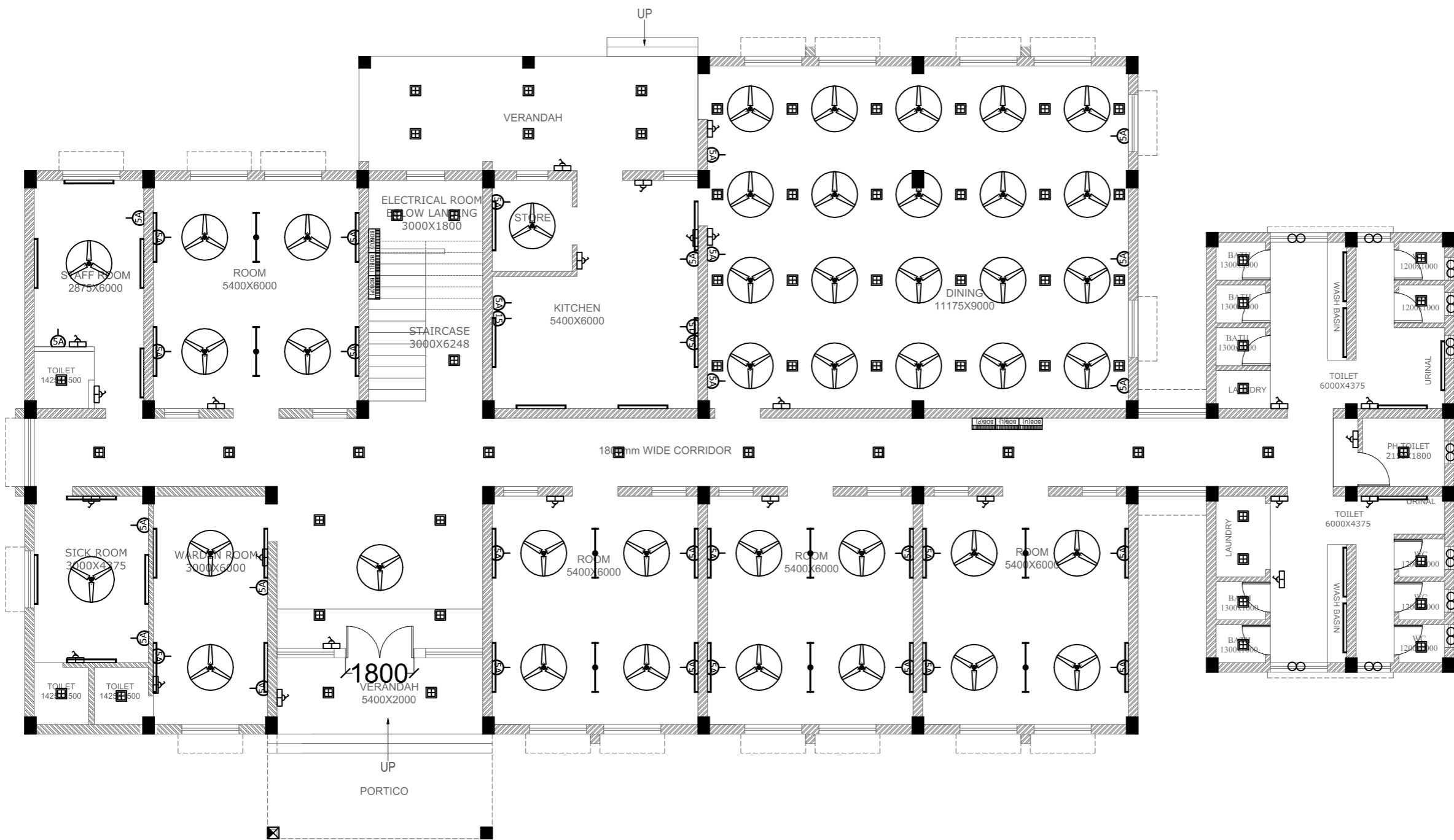
- General Notes :**
- o This drawing is the property of M/s. inFORM Architects & is not to be used or reproduced without their prior permission .
 - o The drawing is not to be scaled .Only written dimensions are to be followed .
 - o Any deviations or changes should be referred to the Architect.
 - o All dimensions are in feet & inches unless otherwise mentioned.
- Structural Notes :**
1. THE WORK SHALL BE CARRIED OUT STRICTLY IN ACCORDANCE WITH THE LATEST VERSIONS OF IS :456
 2. STEEL REINFORCEMENT TO BE USED IN THE R.C.C WORK SHALL BE OF Fe 500 AND GRADE OF CONCRETE IS M25
 3. LAP LENGTH = 48Ø WHERE Ø IS THE DIMENSION OF REINFORCEMENT
 - 4 . (i) IN CASE OF SLAB 20mmCOVERAGE SHOULD BE PROVIDED
(ii) IN CASE OF BEAM 25mmCOVERAGE SHOULD BE PROVIDED
(iii) IN CASE OF COLUMN 40mmCOVERAGE SHOULD BE PROVIDED
(iv) IN CASE OF FOOTING 50mmCOVERAGE SHOULD BE PROVIDED

| | | | | | | |
|---|--|--------------------|--|-------------------------------|------------------------------|--|
| PROJECT :- GAIL CSR PROJECT- SUPPORT FOR CONSTRUCTION OF HOSTEL BUILDING TO PROMOTE LITERACY AMONG TRIBAL STUDENTS AT VANVASHI KALYAN ASHRAM, RAIGADA, ODISHA | TOPIC :- FOUNDATION DETAIL | | SIGNATURE OF STRUCTURAL ENGINEER :- | CHECKED BY :- | CHECKED BY :- | DESIGNED BY:- <div style="text-align: center;">MODUS CREATIVES & PROJECTS PVT LTD.</div> |
| | DRAWING NO: HOSTEL/RAIGADA/STR2 | SCALE : NTS | | APPROVED BY :- | | |



LAYOUT OF GRADE BEAMS

| | | | | | | |
|---|--|--------------------|--|-------------------------------|------------------------------|---|
| PROJECT :- GAIL CSR PROJECT- SUPPORT FOR CONSTRUCTION OF HOSTEL BUILDING TO PROMOTE LITERACY AMONG TRIBAL STUDENTS AT VANVASHI KALYAN ASHRAM, RAIGADA, ODISHA | TOPIC :- GRADE BEAM DETAIL | | SIGNATURE OF STRUCTURAL ENGINEER :- | CHECKED BY :- | CHECKED BY :- | DESIGNED BY:- _____ MODUS <small>CREATIVES & PROJECTS PVT LTD.</small> |
| | DRAWING NO: HOSTEL/RAIGADA/STR3 | SCALE : NTS | | APPROVED BY :- | | |



GROUND FLOOR PLAN

AREA- 589.30 sqm

| LEGEND OF ELECTRICAL FITTINGS | | | |
|-------------------------------|--------|--|--------------------|
| SL. | SYMBOL | SPECIFICATION | HEIGHT ABOVE F.F.L |
| 01 | | 1200/1400mm sweep ceiling fan | Ceiling Level |
| 02 | | 20 watt circular false ceiling fitting | |
| 03 | | 20 watt circular Surface fitting | |
| 04 | | 20 watt circular false ceiling fitting UPS | |
| 05 | | 20 watt circular Surface fitting UPS | |
| 06 | | 300mm sweep exhaust fan | |
| 07 | | TV Point | 900mm Height |
| 08 | | DP Switch 32A | 900mm Height |
| 09 | | 5Amps Switch + Plug Socket outlet only on independent board | 900mm Height |
| 10 | | 15Amps Switch + Plug Socket outlet only on independent board | 900mm Height |
| 11 | | Switch Board with 5 Amps. Socket on it | 1350mm Height |
| 12 | | Branch Distribution board UPS | 2100mm Height |
| 13 | | Branch Distribution board Light | 2100mm Height |
| 14 | | Branch Distribution board power | 2100mm Height |
| 15 | | Electrical main panel | |
| 16 | | 32A Industrial socket | |
| 17 | | 10 watt LED Mirror light | 2100mm Height |
| 18 | | Split AC Indoor Unit | |
| 19 | | AC Out door Unit | |
| 20 | | Two way Electric meter | |
| 21 | | Wifi Router | |
| 22 | | 20W Led Tube light | |
| 23 | | CHARGING POINT FOR ELECTRIC VEHICLE | |
| 24 | | PUBLIC ADESIVE SYSTEM (PA SYSTEM) | |
| 25 | | BULLET CAMERA | |
| 26 | | ANGLE HOLDER | |
| 27 | | 36 W SQUARE LIGHT | |

PROJECT :-
 GAIL CSR PROJECT- SUPPORT FOR CONSTRUCTION OF HOSTEL BUILDING TO PROMOTE LITERACY AMONG TRIBAL STUDENTS AT VANVASHI KALYAN ASHRAM, RAIGADA, ODISHA

TOPIC :-
 GROUND FLOOR ELECTRICAL LAYOUT

DRAWING NO: HOSTEL/RAIGADA/ELE1 **SCALE : NTS**

SIGNATURE OF STRUCTURAL ENGINEER :-

CHECKED BY :-

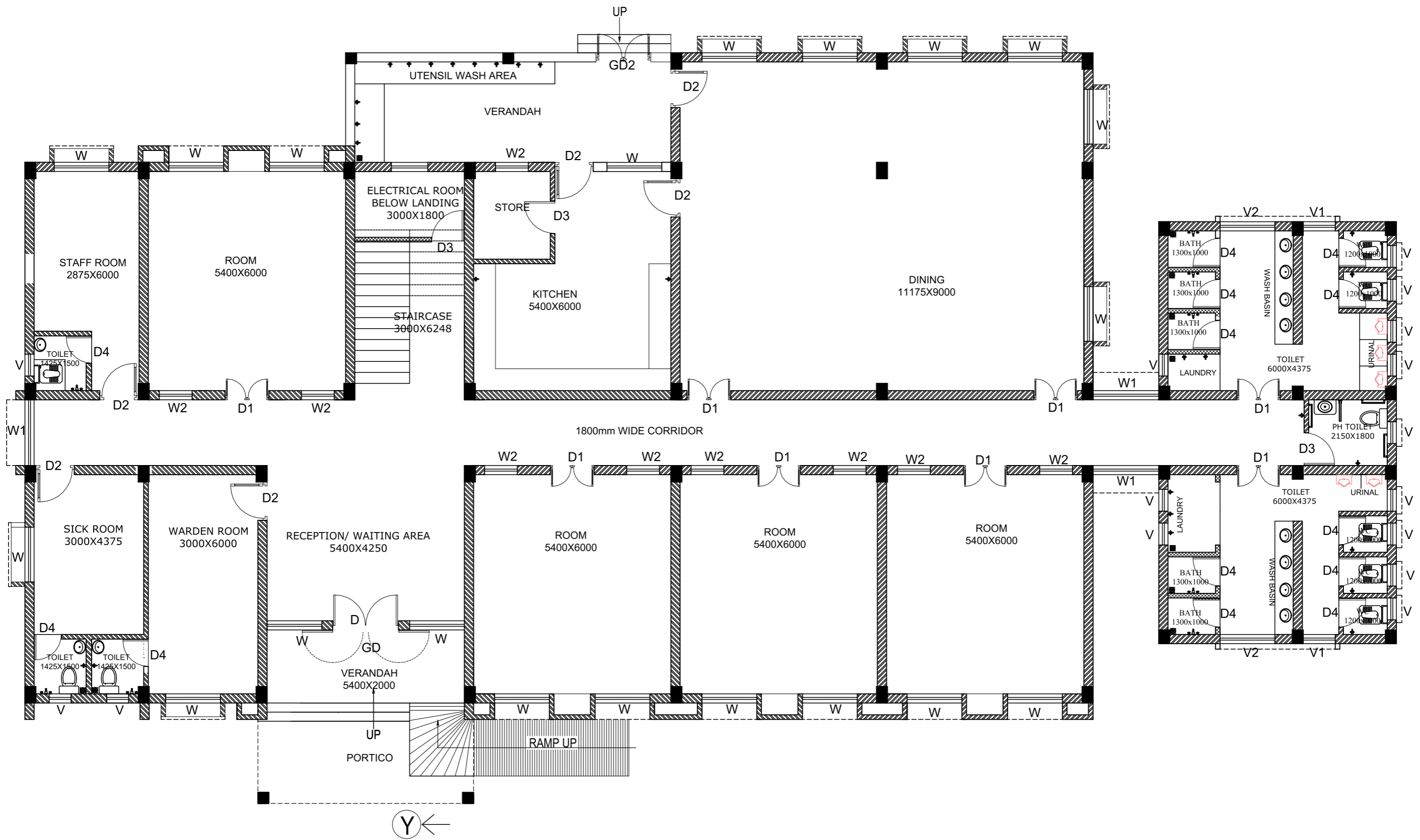
CHECKED BY :-

APPROVED BY :-

DESIGNED BY:-

MODUS
 CREATIVES & PROJECTS PVT LTD.

N-1/11, IRC VILLAGE, BHUBANESWAR-15
 PHONE - 0674 - 6005466
 e-mail : modus.creatives@gmail.com

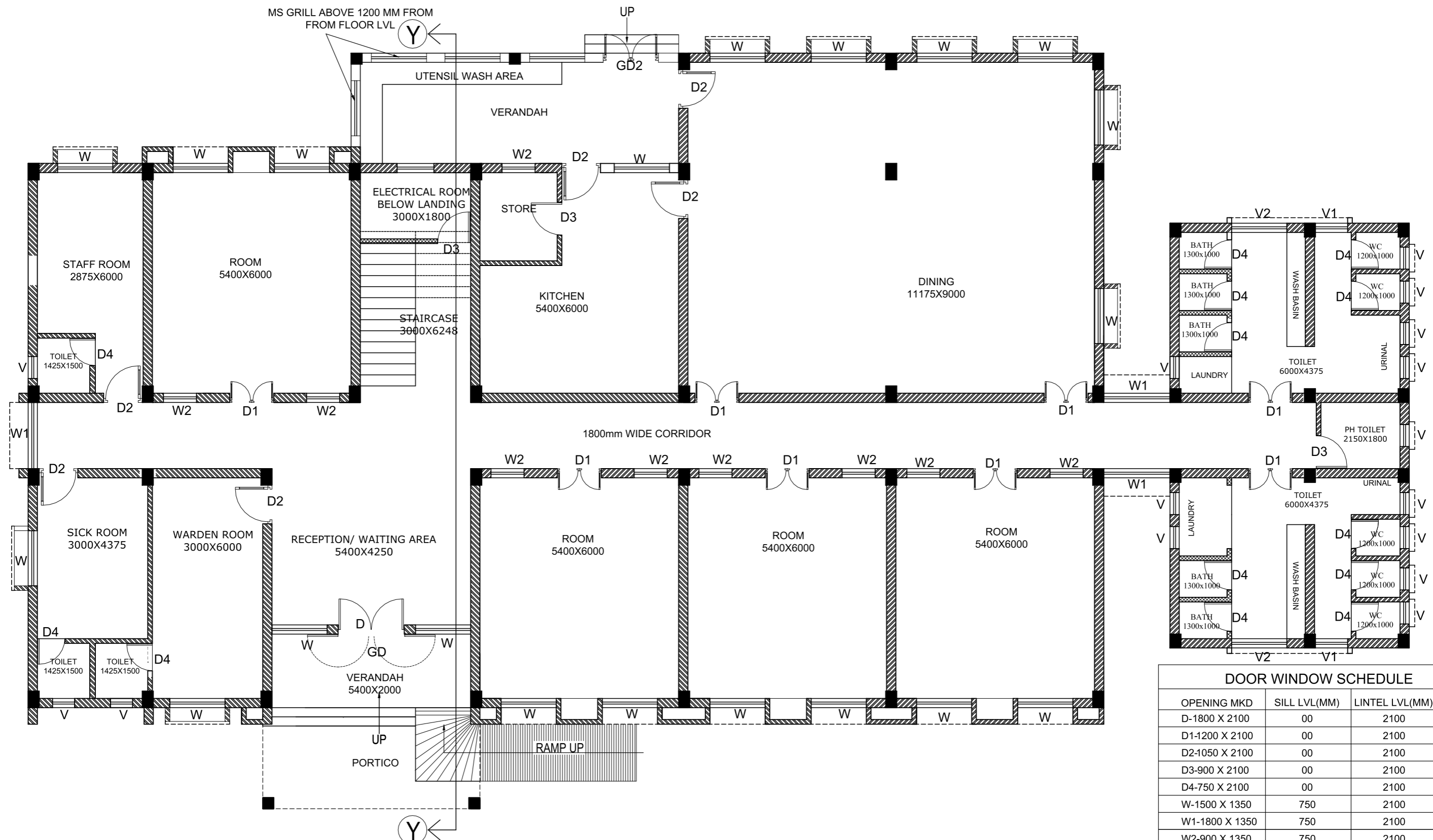


GROUND FLOOR PLAN

AREA- 589.30 sqm



| | | | | | | |
|---|---|--------------------|--|-------------------------------|------------------------------|---|
| PROJECT :- GAIL CSR PROJECT- SUPPORT FOR CONSTRUCTION OF HOSTEL BUILDING TO PROMOTE LITERACY AMONG TRIBAL STUDENTS AT VANVASHI KALYAN ASHRAM, RAIGADA, ODISHA | TOPIC :- GROUND FLOOR PH LAYOUT | | SIGNATURE OF STRUCTURAL ENGINEER :- | CHECKED BY :- | CHECKED BY :- | DESIGNED BY:- <div style="text-align: center;"> MODUS <small>CREATIVES & PROJECTS PVT LTD.</small> </div> |
| | DRAWING NO: HOSTEL/RAIGADA/AR1 | SCALE : NTS | | APPROVED BY :- | | |

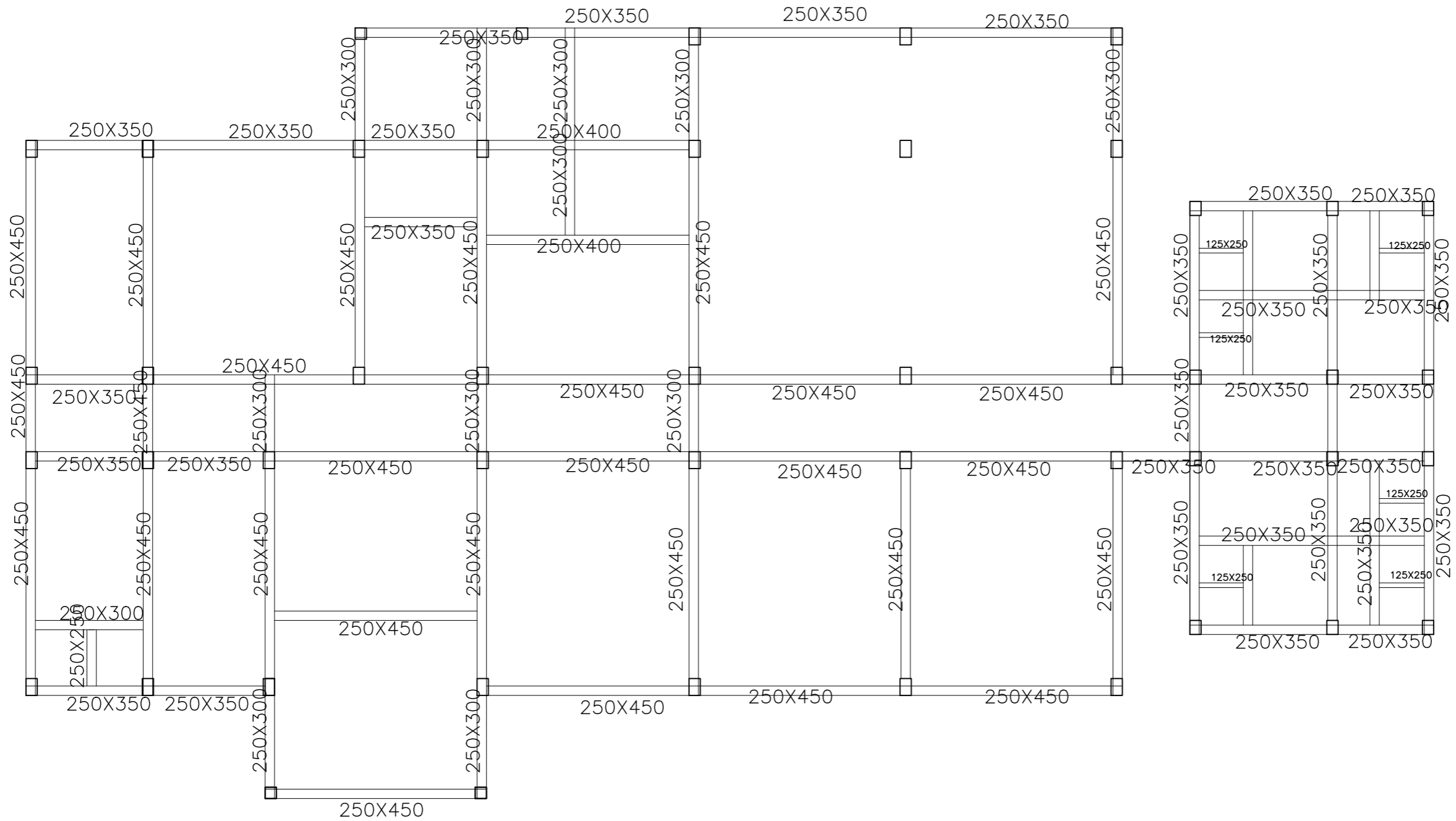


GROUND FLOOR PLAN

AREA- 589.30 sqm

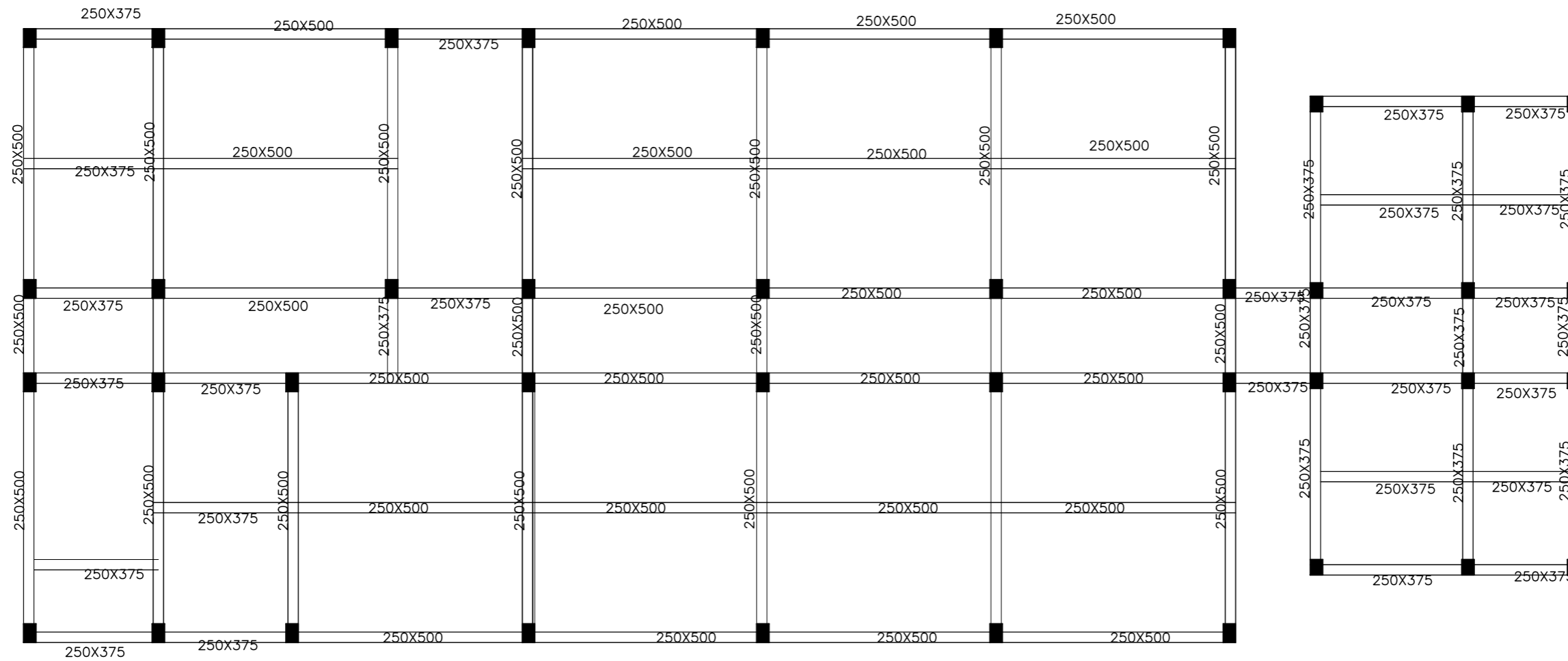
| DOOR WINDOW SCHEDULE | | |
|----------------------|--|----------------|
| OPENING MKD | SILL LVL(MM) | LINTEL LVL(MM) |
| D-1800 X 2100 | 00 | 2100 |
| D1-1200 X 2100 | 00 | 2100 |
| D2-1050 X 2100 | 00 | 2100 |
| D3-900 X 2100 | 00 | 2100 |
| D4-750 X 2100 | 00 | 2100 |
| W-1500 X 1350 | 750 | 2100 |
| W1-1800 X 1350 | 750 | 2100 |
| W2-900 X 1350 | 750 | 2100 |
| W3-900 X 1350 | REFER SECTION | |
| V- 600 X 600 | 1500 | 2100 |
| V1- 600 X 900 | 1200 | 2100 |
| V2- 1500 X 900 | 1200 | 2100 |
| GD1- 1800 X 2100 | 00 | 2100 |
| GD2- 1500 X 2100 | 00 | 2100 |
| GW- 1500 X 900 | 1200 | 2100 |
| V3- 600 X 375 | BELOW ROOF BEAM (REFER SECTION/ELEVATION) | |

| | | | | | |
|---|--------------------------------------|--|------------------------------|------------------------------|--|
| PROJECT :- GAIL CSR PROJECT- SUPPORT FOR CONSTRUCTION OF HOSTEL BUILDING TO PROMOTE LITERACY AMONG TRIBAL STUDENTS AT VANVASHI KALYAN ASHRAM, RAIGADA, ODISHA | TOPIC :- FOUNDATION DETAIL | SIGNATURE OF STRUCTURAL ENGINEER :- | CHECKED BY :- | CHECKED BY :- | DESIGNED BY :- |
| DRAWING NO: HOSTEL/RAIGADA/AR1 SCALE : NTS | | APPROVED BY :- | | | <small>CREATIVES & PROJECTS PVT LTD.</small> |
| N-1/11, IRC VILLAGE, BHUBANESWAR-15 PHONE - 0674 - 6005466 e-mail : modus.creatives@gmail.com | | | | | |



LAYOUT OF PLINTH BEAMS

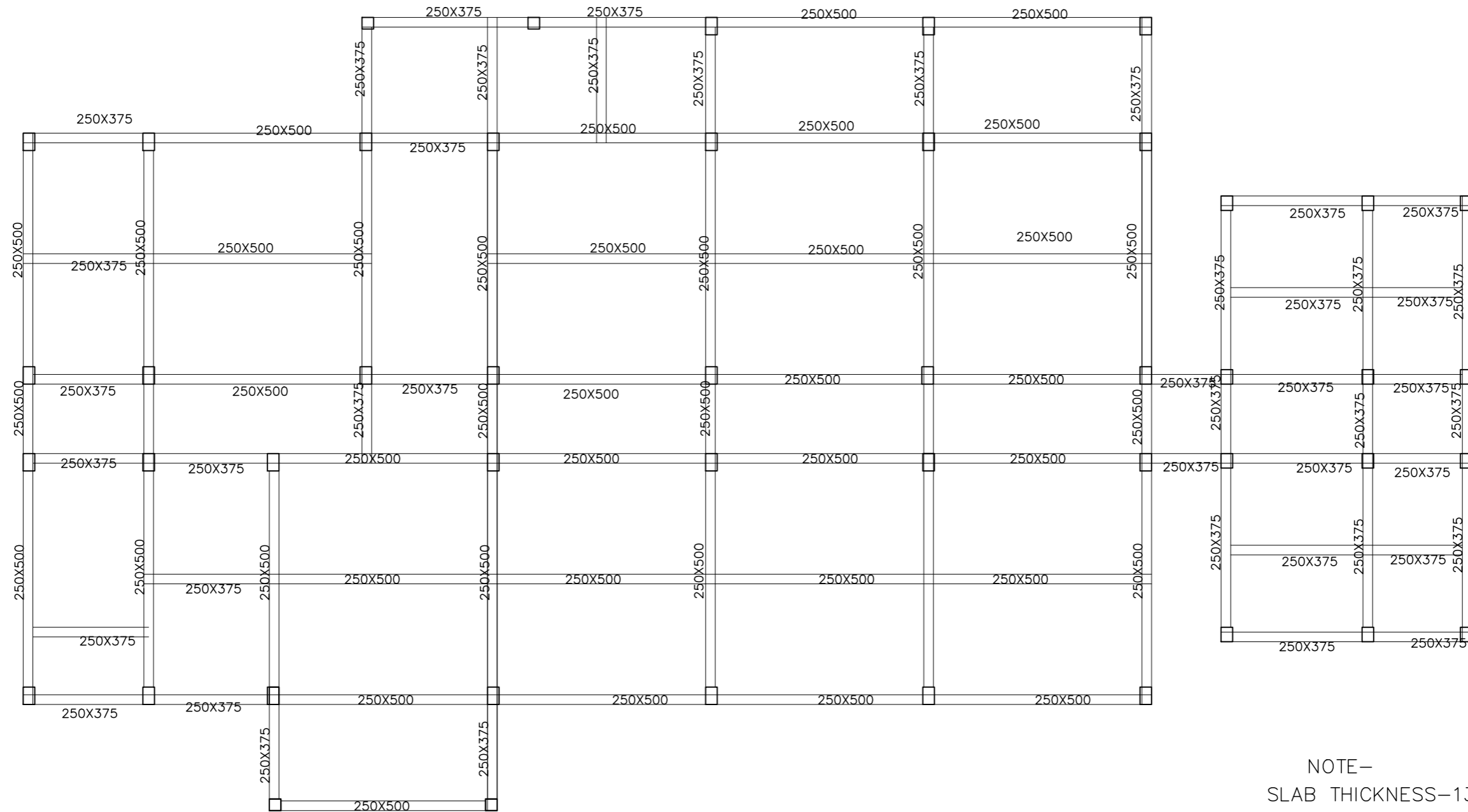
| | | | | | | |
|---|---|--------------------|--|-------------------------------|------------------------------|--|
| PROJECT :- GAIL CSR PROJECT- SUPPORT FOR CONSTRUCTION OF HOSTEL BUILDING TO PROMOTE LITERACY AMONG TRIBAL STUDENTS AT VANVASHI KALYAN ASHRAM, RAIGADA, ODISHA | TOPIC :- LAYOUT OF PLINTH BEAMS | | SIGNATURE OF STRUCTURAL ENGINEER :- | CHECKED BY :- | CHECKED BY :- | DESIGNED BY :- <div style="text-align: center;"> MODUS <small>CREATIVES & PROJECTS PVT LTD.</small> </div> |
| | DRAWING NO: HOSTEL/RAIGADA/STR4 | SCALE : NTS | | APPROVED BY :- | | |



NOTE-
SLAB THICKNESS-130MM

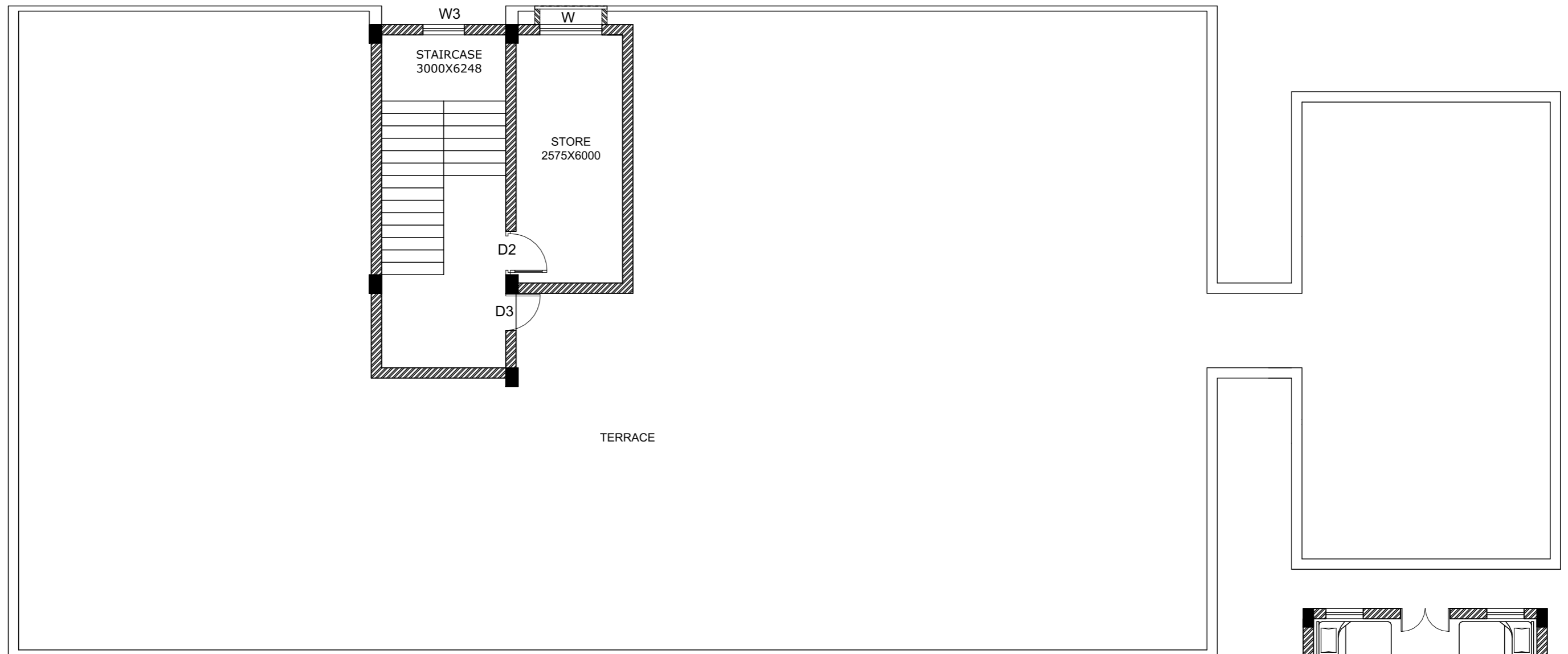
LAYOUT OF FF ROOF BEAMS

| | | | | | | |
|---|--|--------------------|--|-------------------------------|------------------------------|---|
| PROJECT :- GAIL CSR PROJECT- SUPPORT FOR CONSTRUCTION OF HOSTEL BUILDING TO PROMOTE LITERACY AMONG TRIBAL STUDENTS AT VANVASHI KALYAN ASHRAM, RAIGADA, ODISHA | TOPIC :- LAYOUT OF FIRST FLOOR BEAMS | | SIGNATURE OF STRUCTURAL ENGINEER :- | CHECKED BY :- | CHECKED BY :- | DESIGNED BY :- _____ MODUS <small>CREATIVES & PROJECTS PVT LTD.</small> |
| | DRAWING NO: HOSTEL/RAIGADA/STR6 | SCALE : NTS | | APPROVED BY :- | | |



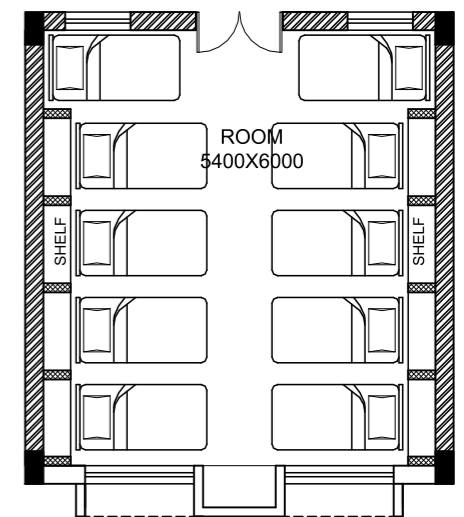
LAYOUT OF GF ROOF BEAMS

| | | | | | | |
|---|--|--------------------|--|-------------------------------|------------------------------|--|
| PROJECT :- GAIL CSR PROJECT- SUPPORT FOR CONSTRUCTION OF HOSTEL BUILDING TO PROMOTE LITERACY AMONG TRIBAL STUDENTS AT VANVASHI KALYAN ASHRAM, RAIGADA, ODISHA | TOPIC :- LAYOUT OF GROUND FLOOR ROOF BEAMS | | SIGNATURE OF STRUCTURAL ENGINEER :- | CHECKED BY :- | CHECKED BY :- | DESIGNED BY :- <div style="text-align: center;"> MODUS <small>CREATIVES & PROJECTS PVT LTD.</small> </div> |
| | DRAWING NO: HOSTEL/RAIGADA/STR5 | SCALE : NTS | | APPROVED BY :- | | |



TERRACE FLOOR PLAN

AREA- 18.36 sqm



ROOM INTERIOR LAYOUT



PROJECT :-
 GAIL CSR PROJECT- SUPPORT FOR
 CONSTRUCTION OF HOSTEL BUILDING TO
 PROMOTE LITERACY AMONG TRIBAL STUDENTS
 AT VANVASHI KALYAN ASHRAM, RAIGADA, ODISHA

TOPIC :-
 FOUNDATION DETAIL

DRAWING NO: HOSTEL/RAIGADA/AR3

SCALE : NTS

**SIGNATURE OF
 STRUCTURAL ENGINEER :-**

CHECKED BY :-

CHECKED BY :-

APPROVED BY :-

DESIGNED BY:- _____

MODUS
 CREATIVES & PROJECTS PVT LTD.

N-1/11, IRC VILLAGE, BHUBANESWAR-15
 PHONE - 0674 - 6005466
 e-mail : modus.creatives@gmail.com